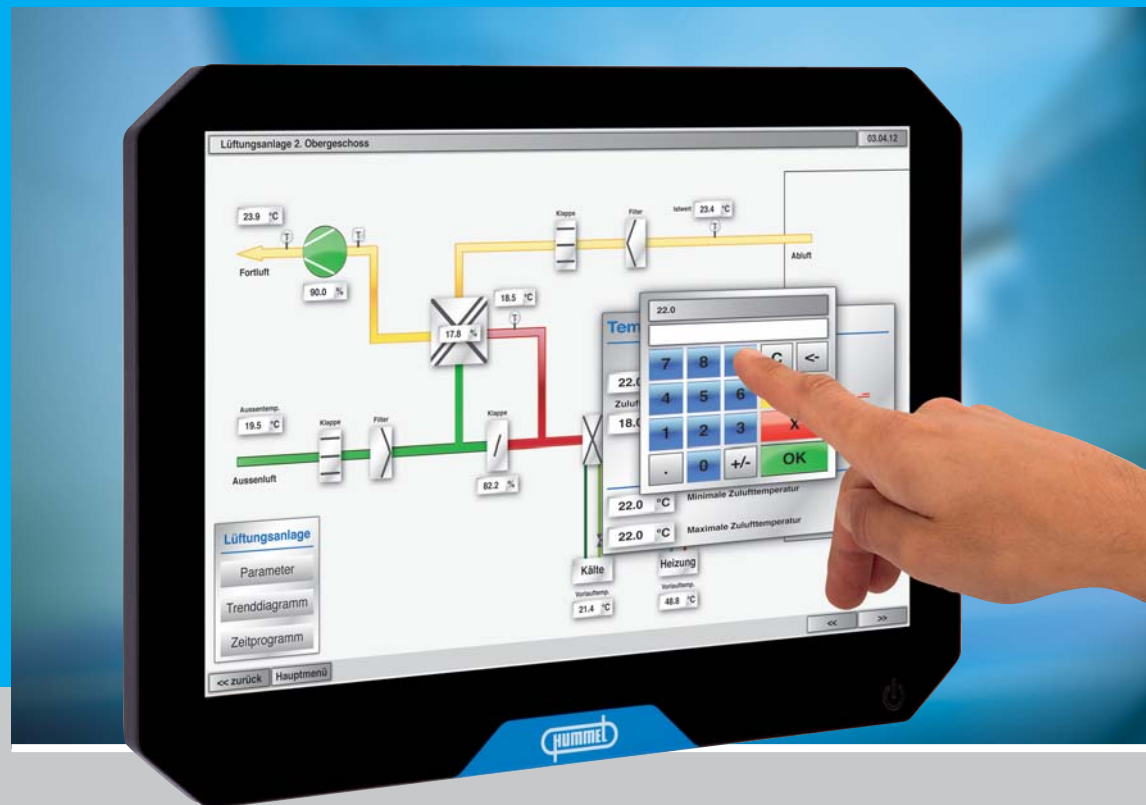


Setting Standards

TOUCHSYSTEMS Made by HUMMEL



■ multitouch ■ capacitive ■ durable

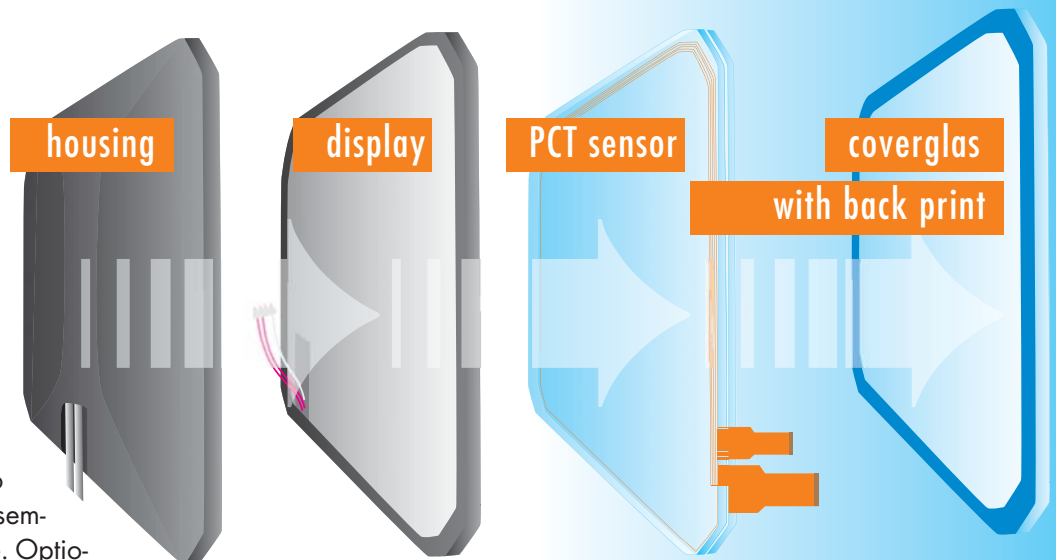
TOUCHPANEL – Made by HUMMEL



Our Touchsystems are aimed at industrial users, who can choose from a wide range of top-quality products and services.

The product portfolio includes standard systems right up to high-end solutions:

- PCT Touchpanels from 5" to 22" as built-in version or assembled in a housing ready to use. Optional with integrated industrial PC.
- Coverglass with printed frame.
- Optional „Optical bonding“.
- Displays
- System solutions



Customised system solutions are one of our strengths.

HUMMEL boasts a high degree of vertical integration in this area, as it is also the case in its Electro Technology and Electronic business divisions. All products are developed and manufactured in-house.

Typical applications in the industrial area include industrial automation, process control and visualization. HUMMEL Touchsystems can also be used in the food & beverages, pharmaceutical and chemical sectors. These branches of industry in particular have special requirements in terms of sustainability, hygiene and cleanliness.

Multitouch – robust – hygienic – brilliance

Multitouch Touchpanels with seamless glass fronts feature a scratch-resistant and impact-proof user interface. The optically bonded glass fronts (available on request) together with LED backlight displays ensure a brilliance that has never been achieved before.

In addition, the built-in PCT technology provides an option to construct Touchpanels such as that they can be operated with any type of gloves and controlled by means of gestures. An impact resistance of IK 08 can be achieved even in glass with minimum thickness without impacting on the ease of use.

The tried and tested HUMMEL Circular Connectors achieve a protection class of IP 67 / IP 69K, which means that the Touchpanels are also suitable for high-pressure cleaning. UL and EX certification are available as well.

The housings are fitted with the VESA 100 system and can be supplied with adjustable monitor arm or a pedestal.

MULTITOUCH Built in-Panel


Protection front IP 65 / rear IP 20

Touch projected capacitive touch (PCT)

multitouch, operable with gloves

optional: brilliance version

Temperature range operating: 0 °C... +60 °C
storage -20 °C...+ 70 °C

Attachment front mounting

Advice:

- steel plate housing
- glass front with aluminium frame
- without cable set and power supply, Accessories on page 8

Customised solutions on request!

Version	Size	Ratio	Resolution	Dimensions in mm	Frame Dimension in mm	Part Number
Standard	8,4"	4:3	800 x 600	277 x 233 x 67	287 x 243 x 5	6.084.2000.01
Brilliance	8,4"	4:3	800 x 600	277 x 233 x 67	287 x 243 x 5	6.084.2001.01
with IPC	8,4"	4:3	800 x 600	277 x 233 x 67	287 x 243 x 5	6.084.2010.01
Brilliance / with IPC	8,4"	4:3	800 x 600	277 x 233 x 67	287 x 243 x 5	6.084.2011.01
Standard	10,4"	4:3	800 x 600	306 x 254 x 68	316 x 264 x 5	6.104.2000.01
Brilliance	10,4"	4:3	800 x 600	306 x 254 x 68	316 x 264 x 5	6.104.2001.01
with IPC	10,4"	4:3	800 x 600	306 x 254 x 68	316 x 264 x 5	6.104.2010.01
Brilliance / with IPC	10,4"	4:3	800 x 600	306 x 254 x 68	316 x 264 x 5	6.104.2011.01
Standard	12,1"	4:3	1024 x 768	330 x 270 x 68	340 x 280 x 5	6.121.2000.01
Brilliance	12,1"	4:3	1024 x 768	330 x 270 x 68	340 x 280 x 5	6.121.2001.01
with IPC	12,1"	4:3	1024 x 768	330 x 270 x 68	340 x 280 x 5	6.121.2010.01
Brilliance / with IPC	12,1"	4:3	1024 x 768	330 x 270 x 68	340 x 280 x 5	6.121.2011.01
Standard	15"	4:3	1024 x 768	397 x 321 x 73	407 x 331 x 5	6.150.2000.01
Brilliance	15"	4:3	1024 x 768	397 x 321 x 73	407 x 331 x 5	6.150.2001.01
with IPC	15"	4:3	1024 x 768	397 x 321 x 73	407 x 331 x 5	6.150.2010.01
Brilliance / with IPC	15"	4:3	1024 x 768	397 x 321 x 73	407 x 331 x 5	6.150.2011.01
Standard	17"	5:4	1280 x 1024	439 x 371 x 75	449 x 381 x 5	6.170.2000.02
Brilliance	17"	5:4	1280 x 1024	439 x 371 x 75	449 x 381 x 5	6.170.2001.02
with IPC	17"	5:4	1280 x 1024	439 x 371 x 75	449 x 381 x 5	6.170.2010.02
Brilliance / with IPC	17"	5:4	1280 x 1024	439 x 371 x 75	449 x 381 x 5	6.170.2011.02
Standard	19"	16:10	1440 x 900	511 x 358 x 68	521 x 368 x 5	6.190.2000.04
Brilliance	19"	16:10	1440 x 900	511 x 358 x 68	521 x 368 x 5	6.190.2001.04
with IPC	19"	16:10	1440 x 900	511 x 358 x 68	521 x 368 x 5	6.190.2010.04
Brilliance / with IPC	19"	16:10	1440 x 900	511 x 358 x 68	521 x 368 x 5	6.190.2011.04
Standard	22"	16:10	1680 x 1050	580 x 402 x 70	590 x 412 x 5	6.220.2000.04
Brilliance	22"	16:10	1680 x 1050	580 x 402 x 70	590 x 412 x 5	6.220.2001.04
with IPC	22"	16:10	1680 x 1050	580 x 402 x 70	590 x 412 x 5	6.220.2010.04
Brilliance / with IPC	22"	16:10	1680 x 1050	580 x 402 x 70	590 x 412 x 5	6.220.2011.04